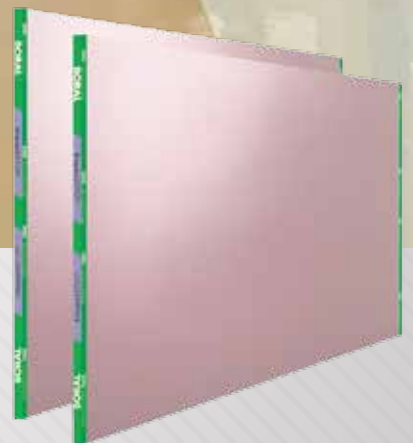


Impactstop

High Impact Resistant



Today's designers no longer need to compromise when considering light weight, fire and high impact resistant solutions for high traffic buildings such as medical, educational or high rise residential. The unique feature of this system is its ability to withstand damage caused by impact from various objects.



BORAL Impactstop

BORAL Impactstop is specially developed as an interior lining for areas which require high impact resistance in commercial, industrial, institutional and residential application. The unique feature of BORAL Impactstop is its ability to withstand damaged caused by impact from various objects.



Product Data

Thickness	Metric (mm)	19mm
Edge Details:	Recessed Edge	Yes
Width (mm):	1220	
Length (mm):	2440	
Weight:	19mm = 16.20kg/m ²	
Product Testing:	BS 476 part 4 / part 22, BS 5234 part 2	

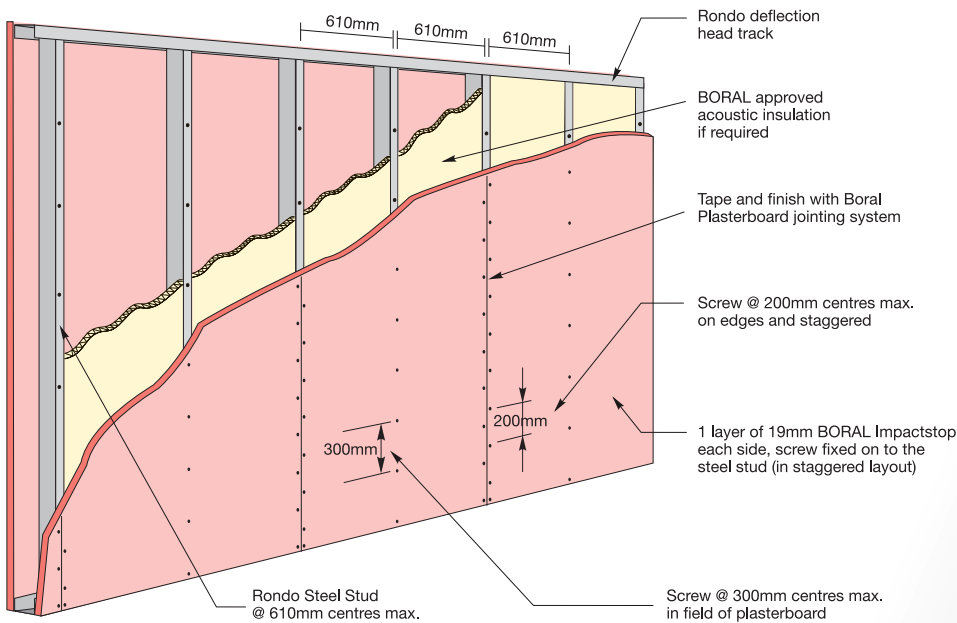
• The above lengths are standard sizes, Boral Plasterboard is able to produce any required sheet length depending upon the order size.

How to specify this product:

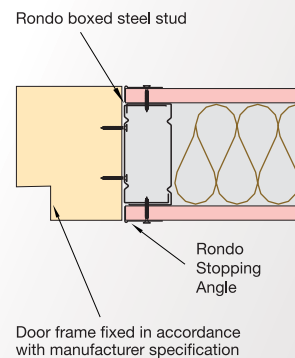
Supply and install BORAL Impactstop 19mm as shown on the relevant drawings. BORAL Impactstop must be installed and finished in accordance to manufacturer's specification.

For more information, please contact our technical service.

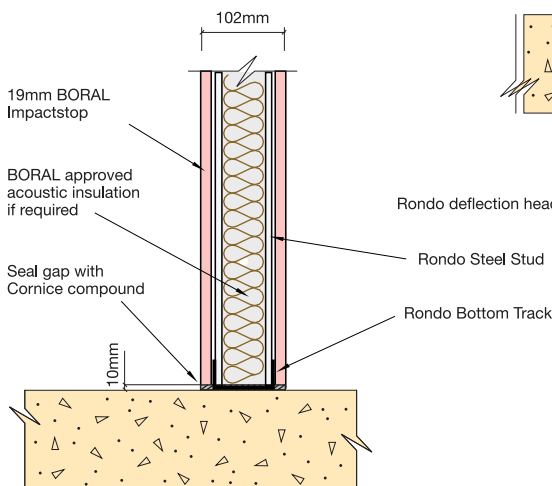
BORAL Impact Wall Partition - 1 Hour Fire Rating



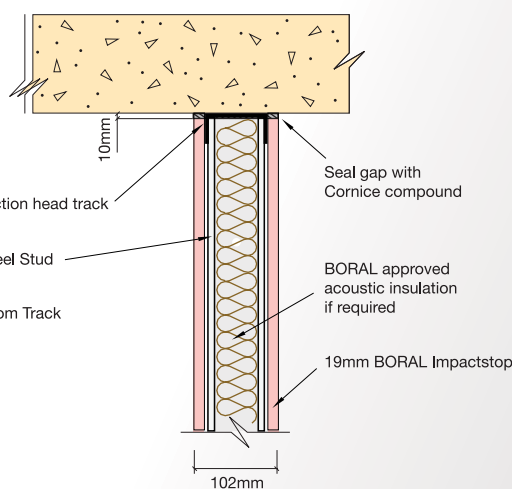
Door Jamb Details



Floor Junction Details



Ceiling Junction Details



Note: Not recommended for external use.

Guarantee :

Boral Plasterboard warrants goods manufactured and supplied by it to be of consistent quality and free from any defects. This warranty shall only apply when goods have been installed with the components and accessories as specified and in accordance with the detailed instructions set out in the Boral Plasterboard Technical Literature.

© 2014 USG BORAL. All rights reserved. The trademarks USG BORAL and INNOVATION INSPIRED BY YOU are trademarks of USG Boral Building Products or one or more of its affiliates.

USG BORAL

**Boral Plasterboard
(Malaysia) Sdn Bhd**

Head Office:

Lot 606, Off Jalan SS13/1K
47500 Subang Jaya
Selangor Darul Ehsan
Malaysia

t (603) 5629 2000

f (603) 5629 2008

www.usgboral.com

